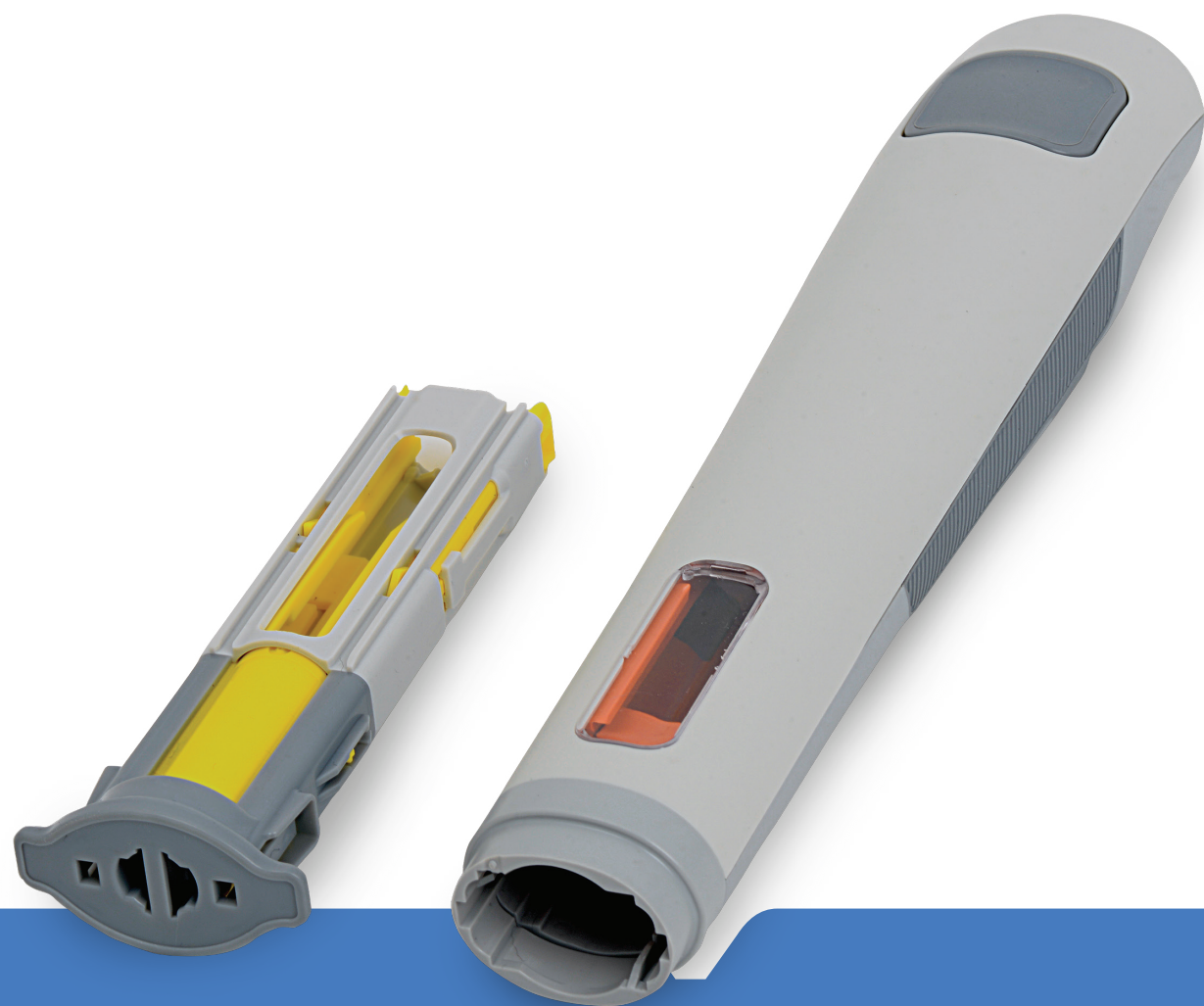


Flexi-Q mMU

Mechanical Multi-Use Auto-Injector
for Drugs in Pre-Filled Syringes



Flexi-Q mMU auto-injector consists of reusable Device and cost-effective, single-use Cassette (pre-loaded with PFS containing drug to be injected). Flexi-Q mMU incorporates passive needle safety features and is designed to offer a cost-effective solution for patients whose treatment requires repeated injections, such as for chronic conditions. With a unique design and simple, 4-step operation, Flexi-Q mMU represents a significantly simpler self-injection device system than traditional reusable auto-injectors.

Pharmaceutical Company Advantages

Differentiation

- Cost-effective reusable Device and single-use Cassette
- Automatic needle insertion with pre-set needle penetration depth
- Automatic injection with pre-set injection duration
- Proprietary force damping mechanism prevents impact damage to glass PFS – allowing use of high-force power springs.
- Fixed delivery volumes of 0.1-1.0 mL, can be customized to 2.25 mL
- Enabling delivery of a range of drug viscosities
- Observation Window – allows inspection of PFS and contents, as well as progress of injection

Selected customizable options of the disposable cassette

- Unique cassette design incorporating a standard glass PFS of different manufacturers
- Drug titration
- Color coding flexibility and other customization options
- Wireless transmission of injection data
- Drug recognition and safety improvement, using RFID technology



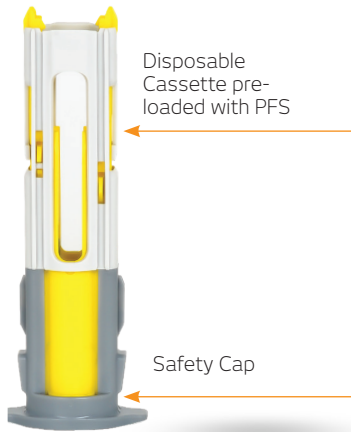
Patient Benefits

Ease of use and convenience


- Simple user interface – no complicated dismantling or unscrewing operations
- Fully automatic injection process
- Needle hidden throughout injection process, reducing anxiety and needle aversion
- Observation Window permits view of entire PFS fill volume and progress of injection


Safety


- Passive needle safety to avoid needlestick injury
- Injection commences only when needle reaches intended depth
- Clear visual and audible confirmation throughout the injection process




User Steps

- 

1. Push Cassette into Device.
- 

2. Inspect PFS and drug through Observation Window. Pull off Safety Cap.
- 

3. Press device against injection site and press Inject Button. Hold device in place until audible and visual signals indicate injection is completed.
- 

4. Lift device from injection site. Eject cassette and discard in appropriate container.

* When the auto-injector is removed from the injection site, a Needle Guard automatically covers and locks over the needle for safe disposal of the used cassette.