

Flexi-eMU-P

Electromechanical Multi-use Auto-injector for drugs in pre-filled syringes.
Smart features and wireless data transmission



Pharmaceutical Company Advantages:

Functionality and Operation

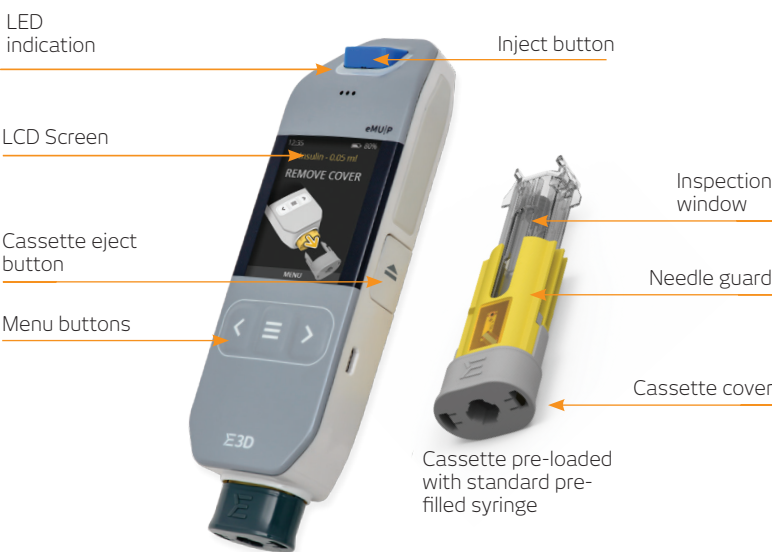
- Reusable, rechargeable electromechanical Device
- Single-use, disposable Cassette pre-loaded with PFS
- Fixed or variable delivery volumes (0.1 mL to 1 mL)
 - 2.25 mL PFS variant also available
- Automatic needle insertion, injection and needle retraction
 - Needle hidden at all times
 - Passive needle safety
 - Drug delivery begins only after full needle penetration
- Advanced user interface featuring LCD screen and functional keys, providing
 - Real-time user guidance and confirmation
 - Access to optional user control of injection parameters
 - Calendar settings and injection reminder alerts
- Skin sensor ensures appropriate contact with injection site before activation
- Suitable for injection of high-viscosity drugs

Features

- Optional user controls
 - Injection time setting (3 - 100 seconds)
 - Needle penetration depth (6 - 12mm)
- Optional dose calculation (e.g. by body weight) and automated dose setting
- Temperature sensor ensures refrigerated drugs appropriately warmed before injection
- Drug/PFS validation and expiry check using RFID technology
- On-screen access to injection log
- Wireless transmission of injection data to remote storage

Technical Information

- Smartphone design, suitable for pocket size
 - Length x Width x Height 120 x 60 x 20mm
- Rechargeable batteries: 30 injections per charge



Flexi-Q eMU-P system is comprised of a reusable Device and single-use Cassette pre-loaded with a standard pre-filled syringe (PFS).
Flexi-Q eMU-P is particularly suitable for use in long-term therapies that require frequent injections, such as multiple sclerosis, autoimmune conditions and blood disorders.
The reusable design of Flexi-Q eMU-P lowers cost per injection and reduces the volume of material for storage and disposal.

User Steps



1. Insert Cassette into Device port



2. Remove Safety Cap



3. Push Device against injection site and press Inject button



4. Eject Cassette and dispose of in appropriate container